

**CHC43415**

# **CERTIFICATE IV IN LEISURE AND HEALTH**

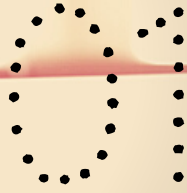
**CHC43415**

**Nationally recognised qualifications that meet the  
standards under the Australian Qualifications Framework.**



1300 835 373

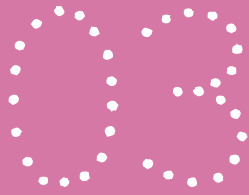
[www.nationalcollege.edu.au](http://www.nationalcollege.edu.au)  
RTO ID 91000



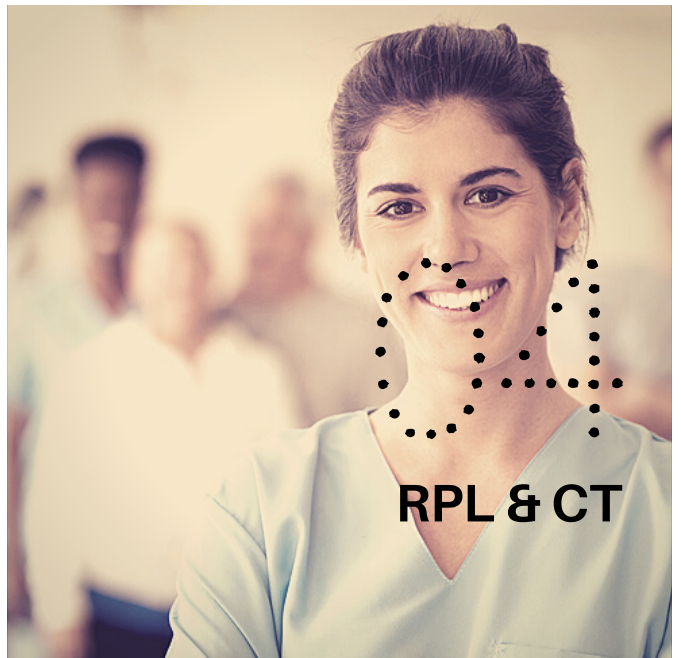
**ABOUT**



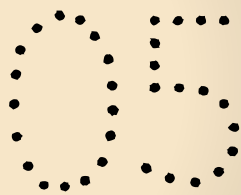
**COURSE OUTLINE**



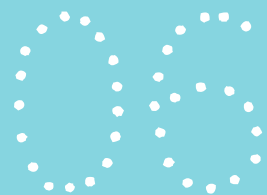
**ONLINE LEARNING  
& ASSESSMENTS**



**RPL & CT**



**WORK  
PLACEMENT**



**COURSE FEES**

# ABOUT

## Why Study Leisure and Health?

This course is designed for workers who are involved in the design, implementation and evaluation of leisure and health activities and programs for clients in the aged care and disability sectors.

It is generally considered as an entry level qualification and is ideal for those interested in a formal qualification to start a career in diversional therapy or community leisure and recreational activities.

Leisure and Health is a vital part of the broader health care sector. Participating in recreational activities is a wonderful way for older people to engage, interact, learn and maintain a level of enjoyment for life.

Once you graduate you are qualified to take up a role as a:

- **Recreational Activities Officer**
- **Diversional Therapy Assistant**
- **Community Leisure Officer**
- **Community Recreation Activity Assistant**

You will not only gain a nationally recognised qualification but also make a real difference to the lives of others.

## Who is this course for?

This course is for:

- People who do not have any experience in leisure and health activities but are interested in something outside the normal care type roles within the aged care sector
- People currently working in a leisure and health related position who do not hold a formal qualification



# ABOUT

## What is the duration of this course?

The average duration of this course is **12 months**, though as you will be completing this course in an online environment, you will have flexibility to complete it earlier. Everyone studies at a different pace, and the time it takes you to finish the course will depend on how much you already know and how much experience you have.

National College Australia (NCA) suggests you will need to spend **an average of 13 hours of study per week** to complete the qualification within the maximum course duration. Your course includes a minimum of **120 hours** in a suitable workplace to complete practical tasks.

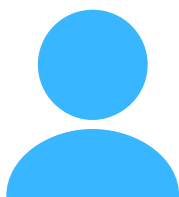
## What do you need to do this course?

This course does NOT have any formal entry requirements but it is important that you have:

- **Access to the internet:** Your reading and assessment materials have been set up online. You will need to have reliable internet to access the resources. If the internet speed is not high enough, you may struggle with uploading the required evidence, including videos, to the platform.
- **Access to the computer:** You will need access to a laptop or desktop for completing your course. You will need some basic computer skills to navigate the online platform using the instructions provided, and download or upload files where required.
- Basic knowledge of using software such as **Microsoft Word, Excel, and Adobe PDF**
- A **level of fitness** that will allow you to undertake physical tasks involved in a day to day work related to the practical requirements of your course.
- **Language, literacy** and **numeracy** skills required to study at this level.

## FUTURE OUTCOMES

### ➔ Job Roles



- Recreational Activities Officer
- Diversional Therapy Assistant
- Community Leisure Officer
- Community Recreation Activity Assistant

### ➔ Working Hours



- Full-time, Part-time or Casual
- Shift work & Flexible hours

### ➔ Salary Guide



\$45,000 - \$55,000 per year

### ➔ Work Settings



- Community Agencies, Residential Facilities
- Aged Care Service Organisation



1300 835 373

[www.nationalcollege.edu.au](http://www.nationalcollege.edu.au)

RTO ID 91000



# COURSE OUTLINE

This course is made up of **17 Units: 10 Core Units and 7 Elective Units.**

It is structured and delivered through a mix of online and workplace-based activities.

When you successfully complete this course, you will receive a certificate issued with **CHC43415 - Certificate IV in Leisure and Health.**

## CHC43415 - CERTIFICATE IV IN LEISURE AND HEALTH

CHCDIV001	Work with diverse people	CORE
CHCCOM002	Use communication to build relationships	CORE
CHCLAH001	Work effectively in the leisure and health industry	CORE
HLTWHS002	Follow safe work practices for direct client care	CORE
CHCLAH002	Contribute to leisure and health programming	CORE
CHCLAH003	Participate in the planning, implementation and monitoring of individual leisure and health programs	CORE
CHCLAH004	Participate in planning leisure and health programs for clients with complex needs	CORE
CHCLAH005	Incorporate lifespan development and sociological concepts into leisure and health programming	CORE
HLTAAP002	Confirm physical health status	CORE
CHCPRP003	Reflect on & improve own professional practice	CORE
CHCCCS015	Provide individualised support	ELECTIVE
CHCAGE001	Facilitate the empowerment of older people	ELECTIVE
CHCDIS007	Facilitate the empowerment of people with a disability	ELECTIVE
CHCDIS003	Support community participation and social inclusion	ELECTIVE
CHCCCS023	Support independence and wellbeing	ELECTIVE
CHCAGE005	Provide support to people living with dementia	ELECTIVE
CHCCCS020	Respond effectively to behaviours of concern	ELECTIVE



# ONLINE LEARNING & ASSESSMENTS

## ➔ How you're assessed



NCA will provide you with the reading resources you need to gain the essential knowledge required to complete your course. Studying the learning materials will prepare you for your assessment.

NCA uses a variety of assessment methods to ensure you have gained sufficient knowledge and skills that are required for you to do the related job roles.

Each Skills Group is made up of a mix of the following assessment activities.

**Knowledge Assessment** including:

- Quizzes
- Short Answer Questions

**Performance Assessment** including:

- Observation of Practical Skills (include verification from Workplace Supervisor)
- Workplace Projects
- Supplementary Evidence (where required)

To complete the performance assessments of your course, you will need to access a suitable workplace. If you are not currently working in a job role related to your course, you will need to do Work Placement. NCA can assist you in finding work placement.

Learning and assessment resources will be provided to you via your online learning platform, NCA iLearn.

If you prefer the reading material in hard copy, we can post the books to you at an additional cost.



## ➔ Your Online Learning Portal



iLearn is a simple and an interactive online learning platform that has been customised for NCA Students.

NCA iLearn stores all your learning and assessment activities, and allows you to track your progress and communicate with your Assessor.



1300 835 373

[www.nationalcollege.edu.au](http://www.nationalcollege.edu.au)

RTO ID 91000

# RPL and CT

## Recognition of Prior Learning (RPL)

The Australian Qualification Framework (AQF) facilitates the progression of students through qualifications by giving credit for learning outcomes they have already achieved. The credit (if granted) may reduce the amount of learning required to achieve a qualification.

RPL is an assessment process that involves assessment of a range of evidence related to your prior learning (including formal, informal and non-formal learning), and past experiences to determine whether you can receive recognition for the learning outcomes you have already achieved.

To be considered for RPL, you must have between 2 - 5 years of experience in a job role related to this qualification, and be able to provide NCA with the evidence of tasks completed. The evidence can include work samples, images, videos, and documents.

You will also need to provide the details of one or more references that have supervised you in the past doing the relevant job tasks. They will need to support your application.

## Credit Transfer (CT)

A Credit Transfer is where you already hold the exact same (or equivalent) unit(s) of competency from a previous qualification.



# WORK PLACEMENT PROGRAM

## Work Placement

### What is Work Placement and who does it apply to?

Work Placement is a structured, assessable workplace learning program that enables you to complete your practical tasks and prepares you for the workforce. Additionally some nationally recognised qualifications allocate a minimum amount of mandatory work hours to specific units of competency.

Anyone who isn't already working in a job role related to the qualification within the industry will need to do work placement.

If you are working in a suitable job role you will be required to provide the evidence of your employment and the ability to perform the practical tasks within your current role.

### Minimum required hours

This qualification has a requirement of a minimum of **120 hours** in Work Placement.

### How to secure Work Placement?

NCA has a dedicated Work Placement Coordinator who will support you through the process of securing work placement.

We recommend that you begin looking for a host employer shortly after commencing your course so you are ready to start placement when you have submitted knowledge assessments for your first Skills Group.

We'll provide you with guidance about when and how to approach employers; and if you cannot find a host employer, our Work Placement Coordinator will provide assistance.

*Please note that some organisations may request a police clearance check before you're able to start work placement. You'll need to organise the police check yourself.*

### Other courses you might be interested in:

- HLT43015 Certificate IV in Allied Health Assistance (Physiotherapy or Occupational Therapy)
- CHC43015 Certificate IV in Ageing Support
- CHC42015 Certificate IV in Community Services
- CHC43315 Certificate IV in Mental Health
- CHC43115 Certificate IV in Disability

### Your Study Pathway

**THE NEXT STEP**  
CHC53415 Diploma Of  
Leisure and Health





# COURSE FEES

## Course Fee Payment Options

### 1 Pay in Full & Upfront - Receive 20% Discount

**Full Course Fee:** \$4900.00<sup>^</sup>

**20% Discounted Fee:** \$3920.00<sup>^</sup>

**Save:** \$980.00<sup>^</sup>

<sup>^</sup>Complies with ASQA Fee Protection requirements



### 2 Pay with Zip Own it now, pay later



- Spending up to \$1,000
- Interest free always
- Flexible repayments.

#### Zip Money

- Pay for courses from \$1,000 to \$5,000
- Up to 6 and 12 months interest free for Certificate III and IV courses
- For amounts over \$5,000, we offer other finance options.

[CLICK HERE](#)



### 3 Study Now, Pay Later with ZeeFi



- Choose weekly, fortnightly or monthly repayments over 6 -24 months.
- Loan amount from \$2,000 - \$7,225

#### Student Eligibility:

- 18 years or older (OR 16 years or older if a parent/guardian applies on your behalf).
- Australian Citizen, Permanent Resident living in Australia.
- Have a mobile phone and email address.

[CLICK HERE](#)



# A non-refundable deposit of \$199 is required upfront to pay with Zip or Study Loan

## Pay your deposit today, pay the rest later



**CONTACT NCA COURSE  
ADVISORS FOR MORE  
PAYMENT Q&As!**



[CLICK ME](#)

[\\*T&Cs - CLICK HERE](#)

[SMART & SKILLED FEES - CLICK HERE](#)



1300 835 373

[www.nationalcollege.edu.au](http://www.nationalcollege.edu.au)

RTO ID 91000

# GET STARTED

## Why National College Australia?

There are many reasons for choosing NCA :

- We are a niche provider for the aged care and community services sectors. It is all we do so this is where our expertise lies.
- You will be allocated one main assessor from start to finish. Your assessor will be your main point of contact for any academic matters. Where the assigned Assessor becomes unavailable due to unforeseen circumstances, another Assessor will be assigned to you.
- We monitor your performance to make sure you're on track. The more you stick to your study plan, the greater your chances of success.
- Our Diploma courses have a recognised pathway for higher education. e.g Charles Sturt University.
- Flexible learning across all our Certificate and Diploma level courses.
- Receive 20% off on full course fees when paying upfront.
- Flexible payment plans, choose to pay weekly or fortnightly.
- Government funding available for NSW residents.
- Take advantage of our Cooling Off Period so you have the time to be 100% confident of your enrolment.

## Happy Student Story

➔ **Hazel. R**

***I've been so happy and thankful for National College Australia in helping me reach my dreams.***

*Two months after receiving my certificate I got a job!*

*My journey in studying the Certificate III in Allied Health Assistance has taught me a lot. At first, I thought I couldn't make it but because I had a goal and a dream to land a job I really wanted, I just trusted NCA and most importantly I **motivated myself to finish the course to start a new career, and to get a job, which I did!***

66



**Change Lives. Create Futures.**

**GET STARTED**



1300 835 373

[www.nationalcollege.edu.au](http://www.nationalcollege.edu.au)

RTO ID 91000