

# NCA

NATIONAL COLLEGE  
AUSTRALIA

CHC43015

# CERTIFICATE IV IN AGEING SUPPORT

---

CHC43015

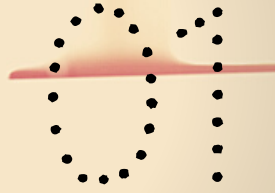
**Nationally recognised qualifications that meet the  
standards under the Australian Qualifications Framework.**



1300 835 373

[www.nationalcollege.edu.au](http://www.nationalcollege.edu.au)

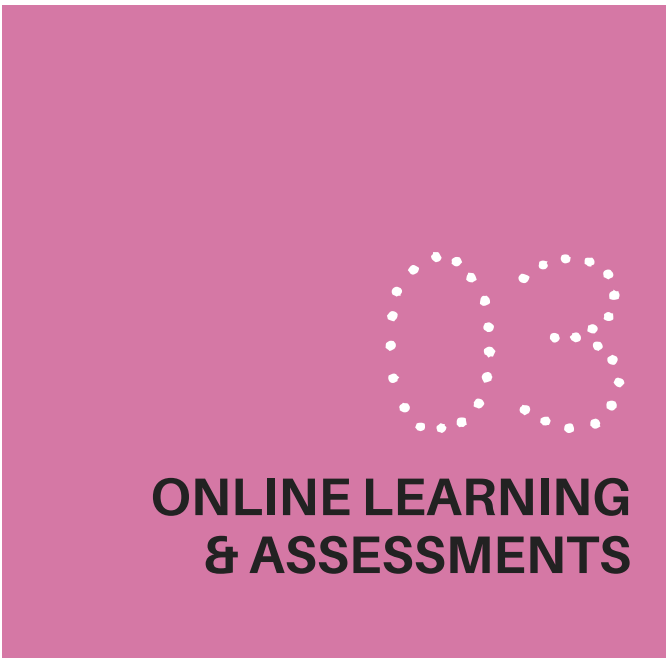
RTO ID 91000



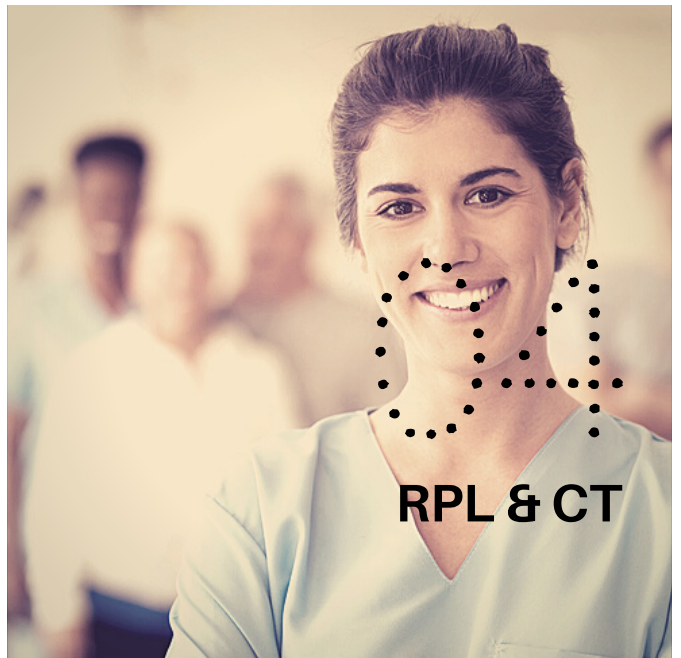
**ABOUT**



**COURSE OUTLINE**



**ONLINE LEARNING  
& ASSESSMENTS**



**RPL & CT**



**WORK  
PLACEMENT**



**COURSE FEES**

# ABOUT

## Why Study Ageing Support?

Aged care is one of the fastest-growing industries in Australia due to being an ageing population.

This course is designed for support workers who undertake specialised tasks and functions in residential, home or community based ageing services environments. It is the next level up from basic support level work within the aged care industry. Workers at this level may be required to work autonomously and have limited responsibility for supervising others.

The course is designed for people who hold a Certificate III qualification, or who have at least a few years' continual experience working as a personal care/support worker in a residential, aged care facilities, or clients' homes.

To complete this course, you'll need to deal with the physical demands of personal care and be able to demonstrate genuine compassion and empathy towards others.

## Who is this course for?

### New Entrants including:

- people who hold a Certificate III in Individual Support
- people who do not hold a qualification, but have at least 3 years of ongoing industry experience in an ageing services environment providing basic care to clients as a care worker, personal Support Assistant, Assistant in Nursing, Residential Care Worker, or similar roles.

### Existing Workers including:

People who are currently working within the ageing sector who have over 3 years experience.



# ABOUT

## What is the duration of this course?

The maximum duration of this course is **18 months**, though as you will be completing this course in an online environment, you will have the flexibility to complete it earlier. Everyone studies at a different pace, and the time it takes you to finish the course will depend on how much you already know and how much experience you have.

National College Australia (NCA) suggests you will need to spend **an average of 13 hours of study per week** to complete the qualification within the maximum course duration. Your course includes a minimum of **120 hours** in a suitable workplace to complete practical tasks.

## What do you need to do in this course?

### Existing Worker - Selection Criteria:

Students will need to meet the Selection Criteria requirements to be eligible to enter this course as an existing workers.

Evidence of the student meets the Selection Criteria will be collected as part of the Enrolment process.

- Must be currently employed within the Ageing sector
- Relevant prior training equivalent to a Certificate III or higher or
- LLN Test with report results achieved at level 4 as a minimum requirement
- Must be over the age of 18 years
- As an industry requirement students working in the industry must hold an HLTAID003 Provide First Aid
- Willingness to complete a Police Check Record
- Willingness to complete a Working with Children's Check

### New Entrants - Selection Criteria:

Students will need to meet the Selection Criteria requirements to be eligible to enter into this course as a new entrant.

Evidence of the student meets the Selection Criteria will be collected as part of the Enrolment process.

- Relevant prior training equivalent to a Certificate III or higher or
- LLN Test with report results achieved at level 4 as a minimum requirement
- Must be over the age of 18 years
- As an industry requirement students who will be working in the industry must hold an HLTAID003 Provide First Aid
- Willingness to complete a Police Check Record
- Willingness to complete a Working with Children's Check



# ABOUT

Additionally, it is **important** that you have:

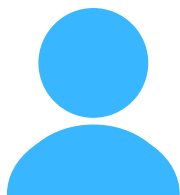
- Access to the internet: Your reading and assessment materials have been set up online. You will need to have reliable internet to access the resources. If the internet speed is not high enough, you may struggle with uploading the required evidence, including the videos, to the platform.
- Access to a computer: You will need access to a laptop or desktop for completing your course. You will also need some basic computer skills to navigate the online platform using the instructions provided, and download, or upload files where required
- Basic knowledge of using software such as Microsoft Word, Excel, and Adobe PDF
- A level of fitness that will allow you to undertake physical tasks involved in a day to day work related to the practical requirements of your course
- Access to printer, and associated software
- Access to a scanner and associated software
- A digital video and audio recording device and supportive software to record, save and upload video and audio files to our online learning platform
- Software to view online videos such as Windows Media Player (can be downloaded from the internet)

03

CHC43015 COURSE GUIDE

## FUTURE OPPORTUNITIES

### Job Roles



- Assistant in Nursing (AIN)
- Personal Care Assistant
- Program Coordinator/ Supervisor
- Care Supervisor
- Care Team Leader
- Residential Care Worker

### → Working Hours



- Full-time, Part-time or Casual
- Shift work & Flexible hours

### → Salary Guide



\$40,000 - \$50,000 per year

### → Work Settings



- Residential Aged Care / Facilities
- Client Homes



1300 835 373

[www.nationalcollege.edu.au](http://www.nationalcollege.edu.au)

RTO ID 91000

# COURSE OUTLINE

This course is made up of **18 Units: 15 Core Units and 3 Elective Units.**

It is structured delivered through a mix of online and workplace-based activities.

When you successfully complete this course, you will receive a certificate issued with **CHC43015 - Certificate IV in Ageing Support**

## CHC43015 CERTIFICATE IV IN AGEING SUPPORT

HLTWHS002	Follow safe work practices for direct client care	CORE
CHCLEG003	Manage legal and ethical compliance	CORE
CHCADV001	Facilitate the interests and rights of clients	CORE
HLTAAP001	Recognise healthy body systems	CORE
CHCCCS011	Meet personal support needs	CORE
CHCDIV001	Work with diverse people	CORE
CHCCCS023	Support independence and wellbeing	CORE
CHCPAL001	Deliver care services using a palliative approach	CORE
CHCCCS025	Support relationships with carers and families	CORE
CHCAGE005	Provide support to people living with dementia	CORE
CHCAGE003	Coordinate services for older people	CORE
CHCCCS006	Facilitate individual service planning and delivery	CORE
CHCPRP001	Develop and maintain networks and collaborative partnerships	CORE
CHCAGE001	Facilitate the empowerment of older people	CORE
CHCAGE004	Implement interventions with older people at risk	CORE
CHCCCS015	Provide individualised support	ELECTIVE
CHCDIS007	Facilitate the empowerment of people with disability	ELECTIVE
CHCCCS017	Provide loss and grief support	ELECTIVE



# ONLINE LEARNING & ASSESSMENTS

## ➔ How you're assessed



NCA will provide you with the reading resources you need to gain the essential knowledge required to complete your course. Studying the learning materials will prepare you for your assessment.

NCA uses a variety of assessment methods to ensure you have gained sufficient knowledge and skills that are required for you to do the related job roles.

Each unit is made up of a mix of online learning, self-paced activities, and on-the-job training via the following assessment activities.

**Knowledge Assessment** includes:

- Quizzes
- Short Answer Questions
- Case Studies

**Performance Assessment** includes:

- P: Workplace Project
- O: Observation Activities

To complete the performance assessments of your course, you will need to access a suitable workplace. If you are not currently working in a job role related to your course, you will need to do Work Placement. NCA can assist you in finding a work placement.

Learning and assessment resources will be provided to you via your online learning platform iLearn.

If you prefer the reading material in hard copy, these will be available for you to download and print at your leisure.



## ➔ Your Online Learning Portal



iLearn learning portal is a simple and an interactive online learning platform that has been customised for NCA Students.

The iLearn LMS stores all your learning and assessment activities, and allows you to track your progress and communicate with your Trainer Assessor.



# RPL and CT

## Recognition of Prior Learning (RPL)

The Australian Qualification Framework (AQF) facilitates the progression of students through qualifications by giving credit for learning outcomes they have already achieved. The credit (if granted) may reduce the amount of learning required to achieve a qualification.

RPL is an assessment process that involves assessment of a range of evidence related to your prior learning (including formal, informal and non-formal learning), and past experiences to determine whether you can receive recognition for the learning outcomes you have already achieved.

To be considered for RPL, you must have a minimum of 3 years of experience in a job role related to this qualification within the last 3 years, and be able to provide NCA with the evidence of competency. Evidence can include work samples, images, videos, and documents.

You will also need to provide the details of one or more references that have supervised you in the past doing the relevant job tasks. They will need to support your application.

## Credit Transfer (CT)

A Credit Transfer is where you already hold the exact same (or equivalent) unit(s) of competency from a previous qualification.



NCA accepts and provides credit to learners for units of competency and or modules (unless licensing or regulatory requirements prevent this) where these are evidenced by:

- a. AQF certification documentation issued by another RTO or AQF authorised issuing organisation or
- b. Authenticated VET transcripts issued by the Registrar.





# WORK PLACEMENT PROGRAM

## Work Placement

### What is Work Placement and who does it apply to?

Work Placement is a structured, assessable workplace learning program that enables you to complete your practical tasks and prepares you for the workforce. Additionally some nationally recognised qualifications allocate a minimum amount of mandatory work hours to specific units of competency.

Anyone who isn't already working in a job role related to the qualification within the industry will need to do work placement.

If you are working in a suitable job role you will be required to provide the evidence of your employment and the ability to perform the practical tasks within your current role.

### Minimum required hours

This qualification has a requirement of a minimum of **120 hours** in Work Placement.

### How to secure Work Placement?

NCA has a dedicated Work Placement Coordinator who will support you through the process of securing work placement.

We recommend that you begin looking for a host employer shortly after commencing your course so you are ready to start placement when you have submitted knowledge assessments for your first Skills Group.

We'll provide you with guidance about when and how to approach employers; and if you cannot find a host employer, our Work Placement Coordinator will provide assistance.

*Please note that some organisations may request a police clearance check before you're able to start work placement. You'll need to organise the police check yourself.*

### Other courses your might be interested in:

- HLT43015 Certificate IV in Allied Health Assistance
- CHC43315 Certificate IV in Mental Health
- CHC43415 Certificate IV in Leisure and Health

### Your Study Pathway

#### THE NEXT STEP

- CHC52015 Diploma of Community Services
- CHC53415 Diploma of Leisure and Health

#### AND BEYOND

Bachelor level degrees in Nursing to become a Registered Nurse (RN)



# COURSE FEES

## Course Fee Payment Options

1

**Pay in Full & Upfront - Receive 20% Discount**

**Full Course Fee:**

**\$4900.00<sup>^</sup>**

**20% Discounted Fee:**

**\$3920.00<sup>^</sup>**

**Save:**

**\$980.00<sup>^</sup>**

<sup>^</sup>Complies with ASQA Fee Protection requirements

20%\*  
Off



2

**Pay with Zip**  
Own it now,  
pay later



- Spending up to \$1,000
- Interest free always
- Flexible repayments.

### Zip Money

- Pay for courses from \$1,000 to \$5,000
- Up to 6 and 12 months interest free for Certificate III and IV courses
- For amounts over \$5,000, we offer other finance options.

[CLICK HERE](#)



3

**Study Now, Pay  
Later with ZeeFi**



- Choose weekly, fortnightly or monthly repayments over 6 -24 months.
- Loan amount from \$2,000 - \$7,225

### Student Eligibility:

- 18 years or older (OR 16 years or older if a parent/guardian applies on your behalf).
- Australian Citizen, Permanent Resident living in Australia.
- Have a mobile phone and email address.

[CLICK HERE](#)



# A non-refundable deposit of \$199 is required upfront to pay with Zip or Study Loan

**Pay your deposit today, pay the rest later**



**CONTACT NCA COURSE  
ADVISORS FOR MORE  
PAYMENT Q&As!**



[CLICK ME](#)

[\\*T&Cs - CLICK HERE](#)

[SMART & SKILLED FEES - CLICK HERE](#)



1300 835 373

[www.nationalcollege.edu.au](http://www.nationalcollege.edu.au)

RTO ID 91000

# GET STARTED

## Why National College Australia?

### There are many reasons for choosing NCA.

- We are a niche provider for the aged care and community services sectors. It is all we do so this is where our expertise lies.
- You will be allocated one main assessor from start to finish. Your assessor will be your main point of contact for any academic matters. Where the assigned Assessor becomes unavailable due to unforeseen circumstances, another Assessor will be assigned to you.
- We monitor your performance to make sure you're on track. The more you stick to your study plan, the greater your chances of success.
- Our Diploma courses have a recognised pathway for higher education. e.g Charles Sturt University.
- Flexible learning across all our Certificate and Diploma level courses.
- Receive 20% off on full course fees when paying upfront.
- Flexible payment plans, choose to pay weekly or fortnightly.
- **Government funding** is available for students living or working in NSW via the Smart & Skilled program.  
**LEARN MORE:** <https://smartandskilled.nsw.gov.au/>
- Take advantage of our 7 Day Cooling Off Period so you have the time to be 100% confident of your enrolment.

## Happy Student Story

### ➔ Hazel. R

*I've been so happy and thankful for National College Australia in helping me reach my dreams.*

*Two months after receiving my certificate I got a job!*

*My journey in studying the Certificate III in Allied Health Assistance has taught me a lot. At first, I thought I couldn't make it but because I had a goal and a dream to land a job I really wanted, I just trusted NCA and most importantly I **motivated myself to finish the course to start a new career, and to get a job, which I did!***

66



**Change Lives. Create Futures.**

**GET STARTED**



1300 835 373

[www.nationalcollege.edu.au](http://www.nationalcollege.edu.au)  
RTO ID 91000