

# NCA

NATIONAL COLLEGE  
AUSTRALIA

**CHC33015**

# CERTIFICATE III IN INDIVIDUAL SUPPORT – AGEING SPECIALISATION

---

**CHC33015**

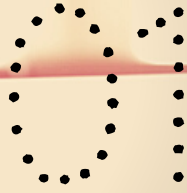
**Nationally recognised qualifications that meet the  
standards under the Australian Qualifications Framework.**



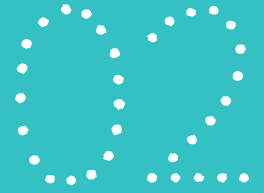
1300 835 373

[www.nationalcollege.edu.au](http://www.nationalcollege.edu.au)

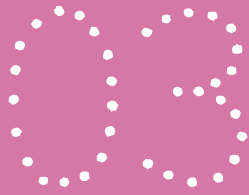
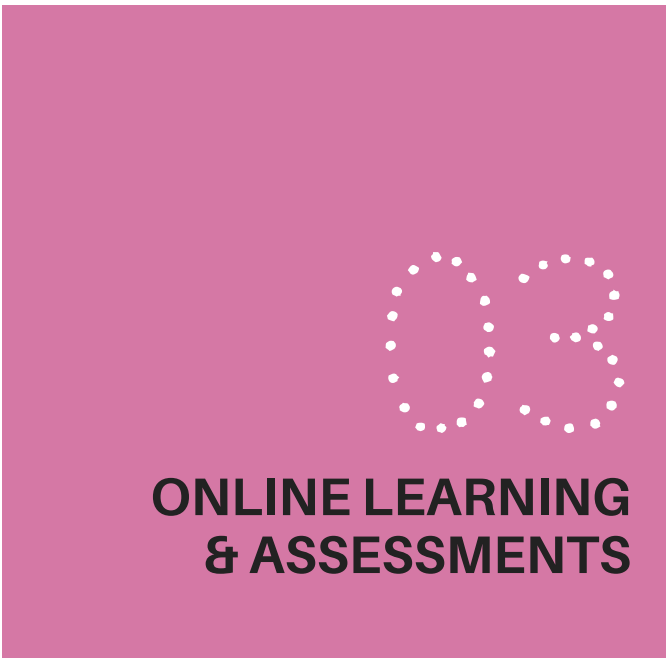
RTO ID 91000



**ABOUT**



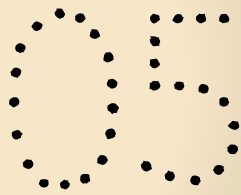
**COURSE OUTLINE**



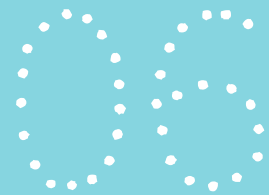
**ONLINE LEARNING  
& ASSESSMENTS**



**RPL & CT**



**WORK  
PLACEMENT**



**COURSE FEES**

# ABOUT

## Why Study Individual Support (Ageing)?

Aged care is one of the fastest-growing industries in Australia due to being an ageing population.

This course is designed for workers in the community and/or residential care facilities who provide individualised support to people who need support due to ageing, disability and other reasons.

The Ageing specialisation prepares you for employment in the aged care industry as a :

- **Care Assistant**
- **Assistant in Nursing (AIN)**
- **Residential Care Worker**
- **Care Worker**

It is the standard entry qualification for personal care work in a residential aged care facility (Nursing Home). It is a recognised pathway to becoming an enrolled nurse (EN). Further university study will lead you to work as a Registered Nurse (RN).

You'll get to learn all aspects of a carer's role, including following an individualised plan to undertake daily personal care tasks to ensure the well-being of older people.

To complete this course, you'll need to deal with the physical demands of personal care and be able to demonstrate genuine compassion and empathy towards others.

If you are interested in a specialisation in home care, you can complete our Double Specialisation in Ageing, Home and Community.

## Who is this course for?

This course is for:

- people who have no experience in aged care and are interested in getting into the industry
- people currently working in aged care in a related job role who do not hold a formal qualification





# ABOUT

## What is the duration of this course?

The average duration of this course is **12 months**, though as you will be completing this course in an online environment, you will have the flexibility to complete it earlier. Everyone studies at a different pace, and the time it takes you to finish the course will depend on how much you already know and how much experience you have.

National College Australia (NCA) suggests you will need to spend **an average of 12 hours of study per week** to complete the qualification within the maximum course duration.

Your course includes a minimum of **120 hours** in a suitable workplace to complete practical tasks.

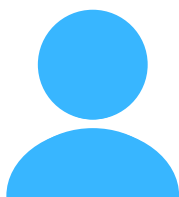
## What do you need to do in this course?

This course does NOT have any formal entry requirements but it is important that you have:

- **Access to the internet:** Your reading and assessment materials have been set up online. You will need to have reliable internet to access the resources. If the internet speed is not high enough, you may struggle with uploading the required evidence, including videos, to the platform.
- **Access to the computer:** You will need access to a laptop or desktop for completing your course. You will need some basic computer skills to navigate the online platform using the instructions provided and download or upload files where required.
- Basic knowledge of using software such as **Microsoft Word, Excel, and Adobe PDF.**
- A **level of fitness** that will allow you to undertake physical tasks involved in a day to day work related to the practical requirements of your course.
- **Language, literacy and numeracy** skills required to study at this level.

## FUTURE OUTCOMES

### ➔ Job Roles



- Assistant in Nursing (AIN)
- Personal Support Assistant
- Residential Support Worker
- Residential Care Worker
- Aged Care Worker

### ➔ Working Hours



- Full-time, Part-time or Casual
- Shift work & Flexible hours

### ➔ Salary Guide



\$40,000 - \$50,000 per year

### ➔ Work Settings



- Residential Aged Care / Facilities
- Hospitals



1300 835 373

[www.nationalcollege.edu.au](http://www.nationalcollege.edu.au)

RTO ID 91000

# COURSE OUTLINE

This course is made up of **13 Units: 7 Core Units and 6 Elective Units.**

It is delivered through a mix of online and workplace-based activities.

When you successfully complete this course, you will receive a certificate issued with **CHC33015 - Certificate III in Individual Support - AGEING.**

## CHC33015 - CERTIFICATE III IN INDIVIDUAL SUPPORT - AGEING SPECIALISATION

HLTWHS002	Follow safe work practices for direct client care	CORE
CHCLEG001	Work legally and ethically	CORE
CHCCOM005	Communicate and work in health or community services	CORE
HLTAAP001	Recognise healthy body systems	CORE
CHCDIV001	Work with diverse people	CORE
CHCCCS023	Support independence and wellbeing	CORE
CHCCCS015	Provide individualised support	CORE
CHCCCS011	Meet personal support needs	ELECTIVE
CHCAGE001	Facilitate the empowerment of older people	ELECTIVE
HLTINF001	Comply with infection prevention and control policies and procedures	ELECTIVE
CHCAGE005	Provide support to people living with dementia	ELECTIVE
CHCDIS002	Follow established person-centred behaviour supports	ELECTIVE
CHCDIS007	Facilitate the empowerment of people with a disability	ELECTIVE



# ONLINE LEARNING & ASSESSMENTS

## ➔ How you're assessed



NCA will provide you with the reading resources you need to gain the essential knowledge required to complete your course. Studying the learning materials will prepare you for your assessment.

NCA uses a variety of assessment methods to ensure you have gained sufficient knowledge and skills that are required for you to do the related job roles.

Each unit is made up of a mix of online learning, self-paced activities, and on-the-job training via the following assessment activities.

**Knowledge Assessment** includes:

- Quizzes
- Short Answer Questions
- Case Studies

**Performance Assessment** includes:

- P: Workplace Project
- O: Observation Activities

To complete the performance assessments of your course, you will need to access a suitable workplace. If you are not currently working in a job role related to your course, you will need to do Work Placement. NCA can assist you in finding a work placement.

Learning and assessment resources will be provided to you via your online learning platform iLearn.

If you prefer the reading material in hard copy, these will be available for you to download and print at your leisure.



## ➔ Your Online Learning Portal



iLearn learning portal is a simple and an interactive online learning platform that has been customised for NCA Students.

The iLearn LMS stores all your learning and assessment activities, and allows you to track your progress and communicate with your Trainer Assessor.



# RPL and CT

## Recognition of Prior Learning (RPL)

The Australian Qualification Framework (AQF) facilitates the progression of students through qualifications by giving credit for learning outcomes they have already achieved. The credit (if granted) may reduce the amount of learning required to achieve a qualification.

RPL is an assessment process that involves assessment of a range of evidence related to your prior learning (including formal, informal and non-formal learning), and past experiences to determine whether you can receive recognition for the learning outcomes you have already achieved.

To be considered for RPL, you must have between 2 – 5 years of experience in a job role related to this qualification and be able to provide NCA with the evidence of tasks completed. The evidence can include work samples, images, videos, and documents.

You will also need to provide the details of one or more references that have supervised you in the past doing the relevant job tasks. They will need to support your application.

## Credit Transfer (CT)

A Credit Transfer is where you already hold the exact same (or equivalent) unit(s) of competency from a previous qualification.



# WORK PLACEMENT PROGRAM

## Work Placement

### What is Work Placement and who does it apply to?

Work Placement is a structured, assessable workplace learning program that enables you to complete your practical tasks and prepares you for the workforce. Additionally some nationally recognised qualifications allocate a minimum amount of mandatory work hours to specific units of competency.

Anyone who isn't already working in a job role related to the qualification within the industry will need to do work placement.

If you are working in a suitable job role you will be required to provide the evidence of your employment and the ability to perform the practical tasks within your current role.

### Minimum required hours

This qualification has a requirement of a minimum of **120 hours** in Work Placement.

### How to secure Work Placement?

NCA has a dedicated Work Placement Coordinator who will support you through the process of securing work placement.

We recommend that you begin looking for a host employer shortly after commencing your course so you are ready to start placement when you have submitted knowledge assessments for your first Skills Group.

We'll provide you with guidance about when and how to approach employers; and if you cannot find a host employer, our Work Placement Coordinator will provide assistance.

*Please note that some organisations may request a police clearance check before you're able to start work placement. You'll need to organise the police check yourself.*

### Other courses your might be interested in:

- CHC33105 Certificate III in Individual Support (Disability)
- CHC33015 Certificate III in Individual Support (Ageing, Home and Community)
- CHC43415 Certificate IV in Leisure & Health

### Your Study Pathway

**THE NEXT STEP**  
CHC43015 Certificate IV in Ageing Support

**AND BEYOND**  
Diploma level qualification in Nursing to become an Enrolled Nurse (EN)





# COURSE FEES

## Course Fee Payment Options

1

**Pay in Full & Upfront - Receive 20% Discount**

**Full Course Fee:**

**\$3500.00<sup>^</sup>**

**20% Discounted Fee:**

**\$2800.00<sup>^</sup>**

**Save:**

**\$700.00<sup>^</sup>**

<sup>^</sup>Complies with ASQA Fee Protection requirements

20%\*  
Off



2

**Pay with Zip**  
Own it now,  
pay later



- Spending up to \$1,000
- Interest free always
- Flexible repayments.

### Zip Money

- Pay for courses from \$1,000 to \$5,000
- Up to 6 and 12 months interest free for Certificate III and IV courses
- For amounts over \$5,000, we offer other finance options.

[CLICK HERE](#)



3

**Study Now, Pay  
Later with ZeeFi**



- Choose weekly, fortnightly or monthly repayments over 6 -24 months.
- Loan amount from \$2,000 - \$7,225

### Student Eligibility:

- 18 years or older (OR 16 years or older if a parent/guardian applies on your behalf).
- Australian Citizen, Permanent Resident living in Australia.
- Have a mobile phone and email address.

[CLICK HERE](#)



# A non-refundable deposit of \$199 is required upfront to pay with Zip or Study Loan

**Pay your deposit today, pay the rest later**



**CONTACT NCA COURSE  
ADVISORS FOR MORE  
PAYMENT Q&As!**



[CLICK ME](#)

[\\*T&Cs - CLICK HERE](#)

[SMART & SKILLED FEES - CLICK HERE](#)



1300 835 373

[www.nationalcollege.edu.au](http://www.nationalcollege.edu.au)

RTO ID 91000

# GET STARTED

## Why National College Australia?

### There are many reasons for choosing NCA.

- We are a niche provider for the aged care and community services sectors. It is all we do so this is where our expertise lies.
- You will be allocated one main assessor from start to finish. Your assessor will be your main point of contact for any academic matters. Where the assigned Assessor becomes unavailable due to unforeseen circumstances, another Assessor will be assigned to you.
- We monitor your performance to make sure you're on track. The more you stick to your study plan, the greater your chances of success.
- Our Diploma courses have a recognised pathway for higher education. e.g Charles Sturt University.
- Flexible learning across all our Certificate and Diploma level courses.
- Receive 20% off on full course fees when paying upfront.
- Flexible payment plans, choose to pay weekly or fortnightly.
- Government funding available for NSW residents.
- Take advantage of our Cooling Off Period so you have the time to be 100% confident of your enrolment.

08

CHC33015 COURSE GUIDE

## Happy Student Story

### → Hazel. R

*I've been so happy and thankful for National College Australia in helping me reach my dreams.*

*Two months after receiving my certificate I got a job!*

*My journey in studying the Certificate III in Allied Health Assistance has taught me a lot. At first, I thought I couldn't make it but because I had a goal and a dream to land a job I really wanted, I just trusted NCA and most importantly I **motivated myself to finish the course to start a new career, and to get a job, which I did!***

[READ MORE](#)

66



**Change Lives. Create Futures.**

**GET STARTED**



1300 835 373

[www.nationalcollege.edu.au](http://www.nationalcollege.edu.au)

RTO ID 91000